

# The Educational Progression of Children from Military Families: National Innovation Conference



#MilitaryChildEd

PROJECT LED BY



THE UNIVERSITY OF  
WINCHESTER

PROJECT FUNDED BY



Ministry  
of Defence

This conference has been a collaboration between the widening participation team and the Centre for Research in Teaching and Teacher Education

# WINdow on HE

*Keeping university in sight*



## FOREWORD

The personnel of the United Kingdom's armed forces make a critical contribution to peace and security around the world. The impacts of the efforts they make are also felt by their families who support them and share in their sacrifices.

We know that children from military service families can demonstrate great qualities of personality – resilience in the face of adversity, maturity in the face of change. We also know that, academically, they generally perform at least as well as their peers from non-military families.

Yet statistics suggest that children from military service families are under-represented in the higher education population. It is in the realm of up to 4 out of 10 children who, if in the general population would go to university, do not go if they are from a military family.

Young people from military service families tell us that their unique experiences help them to develop positive character traits. Yet they also identify the difficulties associated with moving schools, and they tell us of the pressures they experience when their parents are deployed on active service. They tell us that the support they receive regarding their education can be variable, but this does not seem to diminish their hopes and ambitions.

Therefore, we must ask ourselves why children from military service families do not progress to higher education at the rates we might otherwise expect.

Our research findings suggest that, while attention has been paid to the emotional wellbeing and academic achievement of children from military service families, relatively little has been said about their progression through education.


What is missing is a coherent, systematic approach to monitoring and supporting the educational progression of children from military service families. Too often, record-keeping and communication between educational institutions is less robust than it might be, particularly where children move schools. There is a need for schools, parents, local authorities and the military to work together to ensure efficient and effective transition between educational institutions.

The further and higher education sectors must play their roles, too. Collectively we could do more to recognise the responsibilities of, and pressures experienced by, students from military service families. This would include ensuring that they have the right support and opportunities to make the most of their strengths in moving to and through higher education.

We also call on the Government to ensure that students and their families can access support for the continuity of education. This is particularly crucial at post-16, where young people face critical decisions regarding their future education and career trajectories.

Our findings also point to the need for more detailed research into the educational progression of children from military service families, with particular regard to progression and attainment post-16.

The Armed Forces Covenant embodies the principle that members of the armed forces community should face no disadvantage compared to other citizens in the provision of public services. Thus, the findings we present here represent a call to action. We must work together to ensure that children from military service families are able to access the opportunities they need and want in order to thrive and progress through education. In this regard, we hope that these research findings help to build understanding regarding the situations of children from military service families.



**Professor Joy Carter DL, Vice-Chancellor**



Time					Venue
09.30	Arrival and Registration: Networking and poster displays				The Stripe Foyer
10.00	Welcome to Winchester Colette Cherry, Assistant Vice-Chancellor, The University of Winchester				The Stripe Auditorium
10.10	Film: Children from military families: challenges, strengths and messages				
10.30	Practice: Outreach, Resources and Film Dr Terri Sandison and Kath Lawrence with Student Ambassadors, University of Winchester				
10.45	Break: Networking and poster displays				The Stripe Foyer
11.15	Research: The educational progression of service children Dr Judith McCullough, The University of Winchester				The Stripe Auditorium
11.35	Panel Discussion: What are the keys to unlocking higher education progression for the children of armed forces personnel?  Professor John Denham (Chair, Southern Policy Centre) with Professor Les Ebdon (Director of Fair Access, OFFA), Russell Collier (Principal Education Officer, DCYP, MoD), Rick Jump (Acting Headteacher, Park Gate Primary School), Louise Simpson (Evidence Director for the Army Families Federation) Ann Maglio (USAF, School Liaison Officer for RAF Lakenheath/Mildenhall), Dr Judith McCullough (Senior Lecturer, University of Winchester), and Steffi Mutton (Undergraduate, University of Winchester)				
12.15	Lunch				St Alphege Foyer / SAB301/SAB303
13.15	Different perspectives on improving progression for service children: <i>What are the challenges to and opportunities for improving service children’s progression to higher education?</i>				The Stripe and St. Alphege Building
	Families Stripe Studio 2  Lucy Scott and Louise Simpson: Army Families Federation  Anna Wright and Bridget Nicholson: Navy Families Federation	Further/Higher Education Stripe Studio 1  Sally Griffin and Laura Heeley: Bath Spa University  Mandy Weyers: Avon Valley College  Katherine Lawrence: University of Winchester	Schools Lecture theatre  Glyn Wright: Education and Inclusion, Hampshire County Council  Lauren Dickinson: University of Winchester undergraduate	Charities and agencies: Devolved nations SAB 301  Moira Lesley: Royal Caledonian Education Trust  Jason Hurford: HMF Education Support Service  Rhondda Cynon: Taff County Borough Council	
14.40	What have we learned? Conference findings and aspirations				
14.55	Next steps for collaboration with partners across the sector				The Stripe Auditorium
15.00	Conference closes				

# Finding your way around the University of Winchester



- |  |  |  |
|--|--|--|
| 1. Alwyn Hall: Staff offices and Halls of Residence    | 13. Tom Atkinson Building (TAB)                      | 26. Masters' Lodge, Research and Knowledge Exchange Centre |
| 2. St Swithun's Lodge                                  | 14. Fred Wheeler Building (FWB)                      | 27. St Edburga Building (SEB)                              |
| 3. The Cottage   | 15. Bowers Building                                  | 28. Performing Arts Studios                                |
| 4. Kenneth Kettle Building (KKB) and Cyber Italia Café | 16. Centre for Sport                                 | 29. Queen's Road Student Village                           |
| 5. Herbert Jarman Building (HJB)                       | 17. St Alphege Building (SAB)                        | 30. Burma Road Student Village                             |
| 6. The Chapel  | 18. The Stripe                                       |  |
| 7. Main Building (MB)                                  | 19. Beech Glade                                      | <b>A. Visitor parking (must be pre-booked)</b>             |
| 8. St Grimbald's Court (SGC)                           | 20. Medecroft  | <b>B. Dytche parking</b>                                   |
| 9. St Elizabeth's Hall                                 | 21. Medecroft Annexe (MCA)                           | <b>C. Medecroft parking</b>                                |
| 10. St James' Hall                                     | 22. Winchester Business School and West Downs Centre | <b>D. St James parking</b>                                 |
| 11. University Centre; Student Union; Main Reception   | 23. West Downs Student Village                       | <b>E. St Grimbalds parking</b>                             |
| 12. The Martial Rose Library (MRL)                     | 24. Holm Lodge                                       | <b>F. Alwyn parking</b>                                    |
|  | 25. Cemetery Lodge                                   | <b>G. West Downs visitor parking</b>                       |

## Speaker Biographies:

### Russell Collier

Russell joined the Directorate for Children & Young People (DCYP) in February 2016 as the Principal Education Officer. His role encompasses many aspects of the educational support that the department provides Service children and their families, although his focus and responsibilities lie in the developing of stakeholder engagement, educational transition strategies and the quality assurance of the Continuity of Educational Allowance and Service Pupil Premium. He is also responsible for the quality assurance of educational opportunities in ISODETS and Extra Command Areas as well as scoping new educational provision overseas. Prior to this appointment he was the Headmaster of a 3 to 18, all-through, independent school in Cumbria which in 2014 became one of the first independent schools in the country to convert to Free School status. Russell has also held the posts of Deputy Head, Director of Sixth Form and Head of Department in a variety of schools in Birmingham. Thus his educational experiences cover all Key Stages and both the state and independent sectors.

### John Denham

John Denham is Chair of the Southern Policy Centre. The Southern Policy Centre is the independent think-tank/policy forum for central southern England. Its current priorities include: the new localism in southern England, the use of open data to shape public policy, innovative forms of public participation, and health and social care. John Denham was the MP for Southampton Itchen from 1992 until he stood down at the 2015 election. He held a variety of ministerial and Cabinet posts in the last Labour Government and also chaired the Home Affairs Select Committee. In addition to his SPC role, he is a Visiting Professor at Winchester University where he is Director of the Centre for English Identity and Politics, and a Professorial Research Fellow at the London School of Economics.



### Lauren Dickinson



Lauren has just completed her BEd Primary Education at the University of Winchester and is currently working in Year 6 at a Southampton primary school. During her teacher training she became involved in the University's outreach work with children from military families as she is from a Navy family herself and enjoyed seeing the impact her work was making. As part of her dissertation research, Lauren worked with service children in a Hampshire primary school. When she's not in the classroom, Lauren enjoys travelling - especially to America, where she has worked at a summer camp for two years.

### Les Ebdon

Professor Ebdon has been Director of Fair Access to Higher Education since 1 September 2012. He was previously Vice Chancellor of the University of Bedfordshire. That followed an illustrious career in analytical chemistry, including more than 250 publications and several awards. Professor Ebdon obtained his PhD at Imperial College, London, then lectured at Makerere University in Uganda and Sheffield Hallam University, before becoming Reader in Analytical Chemistry at what is now the University of Plymouth. He was promoted to a personal chair in 1986, became Head of Environmental Sciences in 1989 and then, in the same year, Deputy Director. He was promoted to Deputy Vice Chancellor (Academic) in 1992. He remained in that position until 2003, when he was appointed Vice Chancellor at the University of Luton and became Vice Chancellor of the University of Bedfordshire on its creation in 2006. Professor Ebdon was awarded a CBE in 2009 for services to local and national higher education and was appointed Deputy Lieutenant of Bedfordshire in 2011. Since 2013 he has been listed as one of Britain's 500 Most Influential People by Debrett's.



### Sally Griffin

Sally has worked to widen participation in higher education since 2002. As Widening Participation and Access Manager at Bath Spa University, her current role includes the development, implementation, monitoring and evaluation of the University's Widening Participation Strategy, including the University's Access Agreement with the Office for Fair Access. She also manages the team of outreach officers who deliver the University's outreach programmes.

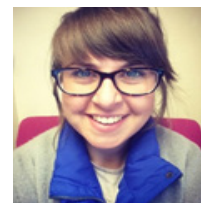
### Michael Hall



Michael works as part of the Widening Participation team at the University of Winchester. After qualifying as a secondary school teacher, he worked in a number of policy, research and communications roles for industry groups representing the manufacturing and construction industries. Michael is currently working towards his PhD; his thesis uses the concepts of Michel Foucault to re-conceptualise the notion of graduate employability. Michael also lectures in education studies at the University of Winchester. Within the Widening Participation team his focus is on outreach in the early secondary years, data monitoring and evaluation.

### Laura Heeley

Laura delivers a range of outreach programmes with local Bath and Wiltshire schools/colleges. She is currently working in a number of schools with a high percentage of students from military families and will be working collaboratively to develop programmes to support those students.



### Jason Hurford



Jason Hurford is a HM Forces Education Support Officer within Rhondda Cynon Taf (RCT) County Borough Council providing targeted support for Service Children in secondary education. Jason served 24 years with the HM Forces, ending his time as the Warrant Officer for Regular Training at the Army Recruiting and Training Division Staff Leadership School (ASLS) and has a passion for coaching and mentoring. He assumed his civilian career as part of the Motivational Preparation College for Training (MPCT) College and Skills Academy programmes, teaching, coaching and mentoring school leavers and secondary school age learners through various levels in Public Services in preparation for future employment. During his HM Forces career Jason served around the world in various operational theatres which resulted in multiple deployments and frequent home movements. His Forces experience as both a married man and a single parent while facing the challenges of balancing his military life and the impact on his own children's education has provided him with the experiences required to support Service Children and their families in RCT. A glutton for punishment in his spare time Jason is now serving as a Regular Reserve as HQ CSM for 3 Royal Welsh.

### Katherine Lawrence

Katherine Lawrence is a Widening Participation coordinator at the University of Winchester. She has organised outreach events at the university for children from military families in primary and secondary schools across Hampshire and managed the research and practitioner project focused on service children's progression. Katherine also works with other local groups of young people who are underrepresented in higher education, particularly primary years 5 and 5 and community groups. She also teaches Japanese and Chinese and manages her local Scout group.



### Moira Leslie



Moira Leslie is a self-employed Education Consultant. She currently manages the Education Programme for the Royal Caledonian Education Trust – a charity supporting the education and wellbeing of youngsters from Armed Forces families. For 22 years she was Head Teacher of Raigmore Primary School, Inverness which has many children from Armed Forces families. Much of her professional career was dedicated to ensuring high quality education for them particularly during transition and when family members were deployed away from home. She worked closely with military personnel and families to ensure similar community support. She has worked closely with Highland Council Educational Psychologists and the University of Stirling on various research projects. She is passionate about Emotional Literacy and it's importance in helping children and young people achieve their potential in life. Moira's current work involves 4 main strands: Training, Resources, Research and Community Engagement – all of which will feature in her workshop at the conference.





### Ann Maglio

Ann Marie Maglio is the School Liaison Officer for RAF Lakenheath/Mildenhall. She is responsible for coordinating and assisting parents of school-aged children with educational opportunities and information necessary to succeed in academic environments with both DoD and UK schools. The SLO is the central point of contact for RAF Lakenheath and RAF Mildenhall commanders, military families and local school systems on school-related matters. Mrs Maglio works to identify barriers to academic success and develops solutions by building partnerships with local agencies to enhance student college and career preparedness. She works with families to promote parent involvement and provides the necessary tools to overcome obstacles to education stemming from military lifestyles. Mrs Maglio was born in Seoul, Korea and was raised in an active duty Army family traveling around the world. Upon graduation from the University of Alaska – Anchorage, she began her career with the Air Force as a civilian employee. She began her career at Hill Air Force Base, Utah as a Training Specialist before transitioning to the Airmen and Family Readiness Center. Mrs Maglio then filled the role of Community Readiness Specialist before accepting the position of School Liaison Officer at Aviano Air Base, Italy. She moved to England with her active duty husband and two children in August 2013, where she was selected as the School Liaison Officer position for RAF Lakenheath/Mildenhall. Mrs Maglio also serves as the Chairperson for Americans Working Around the Globe (AWAG), supporting military communities across Europe.

### Judith McCulloch

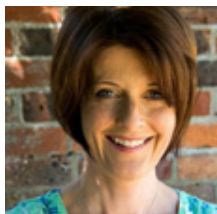
Judith is a senior lecturer in education at the University of Winchester. She passed the first part of her adult life as a Fighter Control Officer (three-dimensional moving geometry) in the Royal Air Force and then crossed over the line, spending the next years as a service wife and mother. After qualifying as a teacher, Judith taught at primary level before joining the teacher education team at Winchester. Her focus is on postgraduate research methods and supervision as well as researching in her two areas of interest: mathematics in education; the education of the service child. Judith maintains active links with the RAF both in the Fighter Controllers' Association and as the mother of a RAF Air Traffic Controller.



### Steffi Mutton

Steffi is in her third year studying Primary Education at the University of Winchester.

### Bridget Nicholson



Bridget joined the Royal Navy in 1991 as a Logistics Officer and was one of the first women to serve at sea. She provided logistics support to submarines in Scotland and to the Royal Navy's Mine Countermeasure and Patrol Vessels, deployed in two ships, and went to the Falkland Islands in support of their Patrol Vessel. She was the officers' recruiter for South East England, and a member of the Admiralty Interview Board. A qualified teacher, she taught in Further and Higher Education, and was a school governor. Her serving husband arrived back in Portsmouth from Afghanistan half way through her PGCE graduation ceremony, having slept for two nights in the back of a Land Rover at Kabul airport. Bridget delivered Initial Teacher Training for 2 years, before moving to the Isle of Wight (her 9th move in 16 years), where she taught behaviour management and evidence-based parenting courses. Bridget led the Naval Families Federation's recent strategic review. She is a regular contributor of relationship and parenting articles to the Federation's magazine 'Homeport'. As a mum to 2 teenagers, she lives in a perpetual round of exam fever, university applications, and rear-guard actions against late-night parties. In her spare time, Bridget volunteers at the Earl Mountbatten Hospice, and keeps sane by running.

### Terri Sandison

Terri Sandison MBE is Director of Lifelong Learning at the University of Winchester, where she has worked since 2004. In this role she has responsibility for Widening Participation strategy and has helped to build the University's national reputation for its work with young people in the care system, asylum seekers, young carers and other groups of young people who are currently under-represented in higher education. Terri's other experience includes teaching and examining in post-16 education and higher education, as well as working in the NHS and for an education-business partnership. She is Governor of a sixth form college and trustee of a local young carers charity. Terri is proud to be a member of 619 Squadron Association as her father is an ex-Squadron Leader and Lancaster pilot from WWII Bomber Command.





### Lucy Scott

Lucy is the Education and Childcare Specialist for the Army Families Federation (AFF) - the voice of Army families. She has worked for AFF in a variety of roles since 2007, both in the UK and in Germany. She receives enquiries from Army families worldwide about children from birth to twenty-five years on a range of topics including access to school places, school appeals, mobility, student finance, SEN and matching curriculum across the devolved areas. Evidence from these enquiries is submitted to AFF's Chief Executive, Ministers, the chain of command and other agencies in order to build a better future for Army children.



### Louise Simpson

Louise Simpson is the Evidence Director for the Army Families Federation (AFF) and has worked for AFF for 8 years. The Evidence Branch is responsible for the evaluation of evidence gathered by AFF's network of staff across the world as well as dealing with specific family issues that often require multi-agency involvement to resolve. Recruited to oversee the implementation of a more evidence based approach, Louise specifically deals with analysis, identifying trends, developing the organisations public policy position and encouraging research on specific Army families issues.

In her spare time Louise is an Army wife with two sons and has moved 12 times in 17 years of marriage.

### Mandy Weyers

Mandy has always worked with Service Families in some way or another. She was a forces child herself, then married someone in the forces and worked in Service Children's Education in Cyprus and Germany. Mandy returned to the UK and started work at Avon Valley College where roughly 48% of the students are children from military families. She helps with anything that may be a barrier to learning – plugging the gaps in students learning (due to numerous moves) to helping with transition. The school supports students whose parents are away on deployment by running afterschool clubs where students can write to their parents and, if possible, skype them.

### Anna Wright

Passing out from Britannia Royal Naval College in 1990, Anna served as a logistics officer for 8 years. She left the Service prior to the birth of her second child in 2000. Highlights of her time in the Service included an appointment as ADC to the Lord High Commissioner at the Palace of Holyrood, leading the Royal Navy's Compulsory Drug Testing Team and competing as part of the RN Women's skiing team (before breaking her jaw during a downhill race!). Anna re-trained as a Business and Economics teacher, completing her PGCE in 2008. She has taught and managed in three Further Education Colleges whilst accompanying her serving husband. A keen economist, Anna enjoyed inspiring and preparing both A Level and undergraduate level students to achieve their qualifications. She completed a Master's degree in Education in 2014. Anna is no stranger to the nomadic naval lifestyle. She has lived in 6 different service family quarters, ranging from Faslane in the North to Portsmouth in the South. Anna became the Director of the Naval Families Federation in 2015.



### Glyn Wright

Glyn has worked for many years in secondary education teaching History and personal development learning. She joined Hampshire Inspectorate and advisory service in 2001, initially as Healthy Schools coordinator. Following a period of being the South East Regional coordinator for Healthy Schools she took up the role of County Inspector/Adviser for PDL in 2005. Since then, in addition to promoting robust and effective PSHE and Citizenship in schools, she has been involved in training around SMSC, British Values, Prevent, Supporting Pupils with Medical Conditions and Effective use of Pupil Premium. Since 2011 her role has also been to support service children and she is the education representative on the Civilian Military Partnership Board.

Please help us by giving your input and views on our evaluation boards, on the form in your delegate pack and join the conversation by using:

**#MilitaryChildEd.**

If you hear a fire alarm please follow the student ambassadors in purple tshirts and lanyards to the muster point on the Dytch

Photographs and video will be taken throughout the day; please contact the registration desk if you would not like your image to be used

A hearing loop is available in the main auditorium

Student ambassadors in purple polo shirts are here to help – please don't hesitate to ask!

The University of Winchester would like to thank the Ministry of Defence's Directorate for Children and Young People for funding the project and Education and Inclusion within Hampshire County Council Children's Services and colleagues in military family support organisations for their input and support. We would also like to thank the children and teachers in our local schools for their input and ideas during outreach events.

Particular thanks go to today's presenters, chairs and panel members for giving up their time. We would also like to thank the university's Widening Participation team, the Centre for Research into Teaching and Teacher Education and colleagues from across the institution.

Every effort has been made to ensure the accuracy of the information contained in this resource, but the University can accept no responsibility for errors or omissions.

© The University of Winchester 2016

Use of Open Governemnt Licence Image on front cover:  
<http://www.nationalarchives.gov.uk/doc/open-government-licence/version/3/>

