

What schools tell us about Service children's education

December 2021

**Steph Fawdry - Headteacher, RAF Benson Community Primary School and Chair of Service Children in State Schools
National Executive Advisory Committee (SCISS NEAC)**
Millie Taylor - SSCE Cymru Programme Manager, Welsh Local Government Association (WLGA)



Steph Fawdry

Chair

Service Children in
State Schools

National Executive
Advisory Committee



The Voice of Schools

Supporting Service Children in England



Millie Taylor
SSCE Cymru Programme Manager, WLGA



SSCE Cymru mission

Knowledge and evidence

Coordinate research and compile evidence on the experiences of Service children in education to ensure their needs are well understood.

Activity and resources

Collaborate with members of the SSCE Cymru Network to conduct activities and produce resources that will help support Service children throughout their education.

Supporting policy and systems

Work with organisations to provide evidence and impact policy relevant to supporting Service children in education.

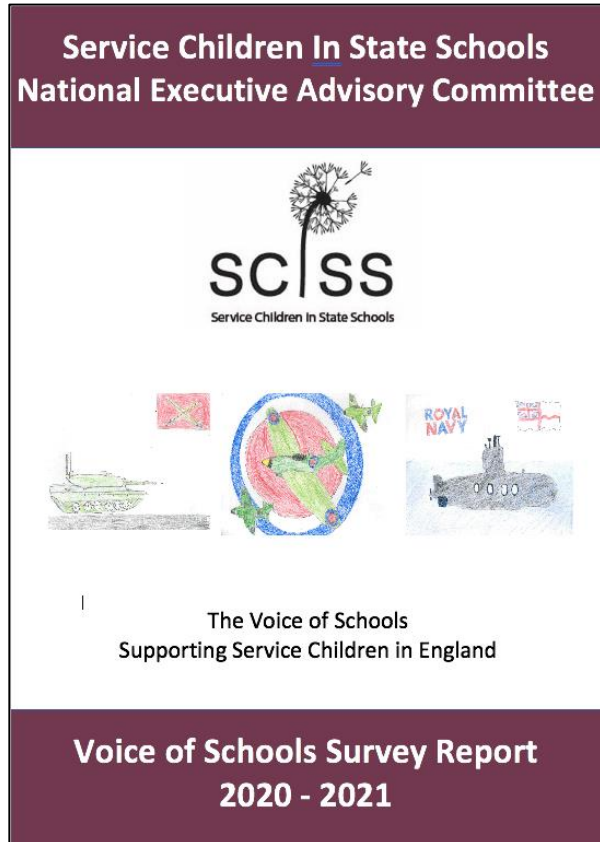


Service Children's Progression



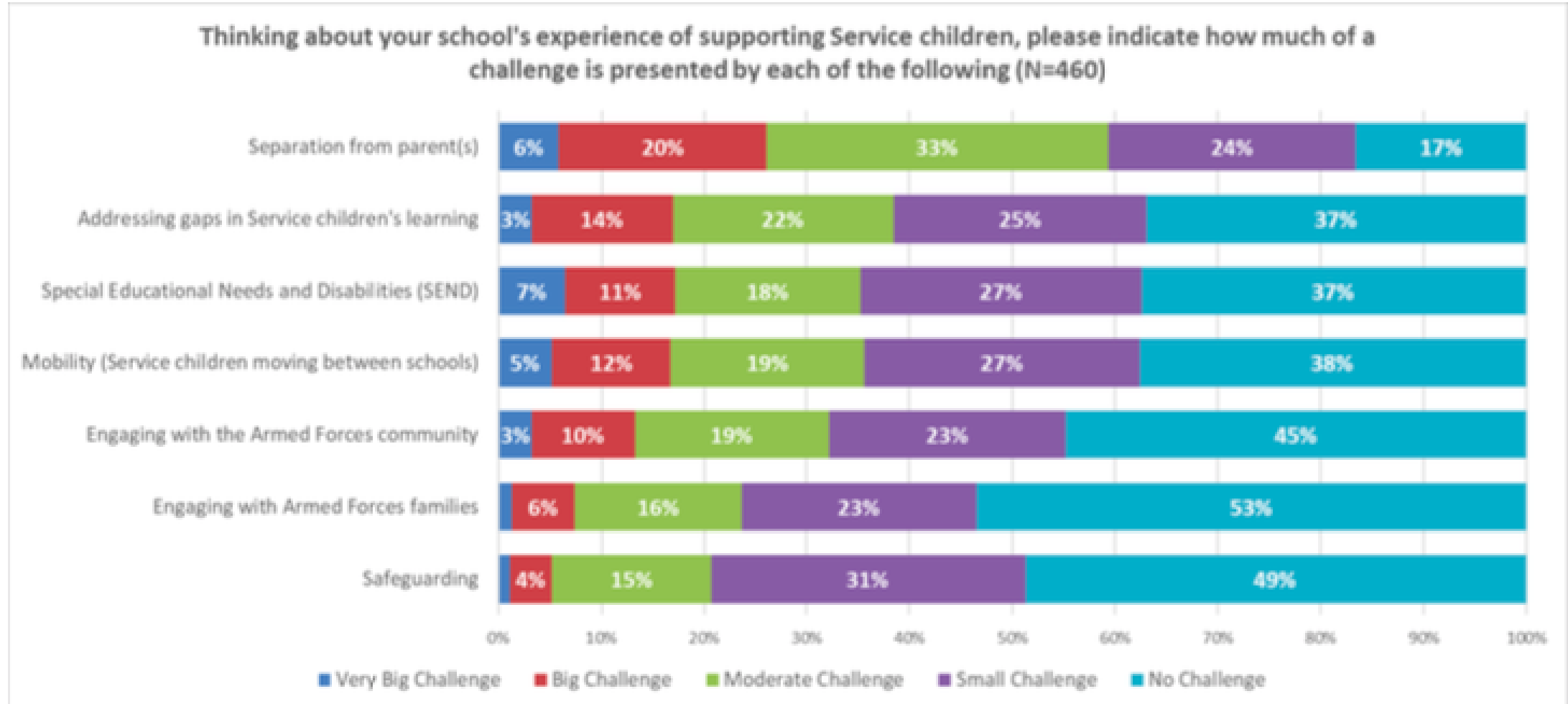
Who are you?

The Voice of Schools Project 2020



- Survey commissioned to gather the views of Schools with Service children across England
- Launched in June 2020 - Over 461 responses!
- The report gives some real food for thought for schools - aligns with and supports key messages from Living in our Shoes

The Voice of Schools Project 2020



The Voice of Schools Project 2020

Challenges from Covid-19

- Disruption and isolation
- Reduced pastoral support
- Greater impacts on Service children – peer to peer contact

The Voice of Schools Project 2020

Influencing, Inspiring and Encouraging

Schools – Celebrate and connect

Stakeholders – Provide with evidence and mutual support

Service providers – Identify and build



The Voice of Schools



The Voice of Schools Project 2020

We are led by experienced and knowledgeable front-line school professionals, but we are aware that the diversity of circumstances experienced by schools with Service children means that we always have more to learn.

Empowered Schools + Effective Policy = Successful Service Children



The Voice of Schools



Cymru stakeholder consultation project

2019/20

Schools

SSCE Cymru invited all schools in Wales that have Service children enrolled to participate in a survey.

Service children

SSCE Cymru ran a number discussion groups in schools in Wales, to hear from Service children about their experiences of education in Wales.

These findings fed into the SCiP Alliance 'Year of the Service Child Voice' project.

Parents/carers of Service children

SSCE Cymru conducted a survey with parents/carers of Service children. Giving them the opportunity to share their experiences about living in/moving to Wales, the impact their lifestyles have on their children's education and the support they have received from schools.

All reports are available at
www.SSCECymru.co.uk



SSCE Cymru school survey

WHY?

To understand the experiences of Service children in education in Wales.

HOW?

Survey, developed with support of the SSCE Cymru stakeholders.

WHEN?

April-June 2019.

WHO?

All schools with Service children were invited to complete the survey.
167 usable responses.



SSCE Cymru school survey

Challenges Service children face in education

Primary schools

43%

Emotional impact of separation

29%

Emotional impact when parent/s return from deployment/training

23%

Emotional impact during deployment.

Secondary schools

34%

Making friends

29%

Missing curriculum content (after a move)

21%

- Adapting to different curriculums in different administrations
- Missing friends and family from previous school/home
- Learning Welsh.



SSCE Cymru school survey

Challenges schools face in supporting Service children

Primary schools

- 44% Supporting Service children with their emotional and Wellbeing needs
- 31% Gaining an understanding of the Armed Forces Lifestyle
- 25% Funding.

Secondary schools

- 42% Supporting Service children with gaps in their learning
- 34% Gaining information on a Service child from a previous school
- 29% Supporting Service children with their emotional and Wellbeing needs.



SSCE Cymru school survey

Most beneficial types of support offered by schools to their Service children

Primary schools

29%

Tailored pastoral support

24%

Dedicated member of staff to support Service children

22%

Service children included in the Pupil Voice.

Secondary schools

38%

Tailored pastoral support

33%

Subject interventions

25%

Dedicated member of staff to support Service children.



SSCE Cymru school survey

Challenges Service children face in education

42% of all schools said they don't currently offer any specific support to their Service children.

41% of schools have put specific interventions in place to support a Service child with specific needs.

15% of schools monitor the academic progress of Service children against non-Service children.

7% of schools encountered issues in meeting prioritisation thresholds for mental health and wellbeing support for a Service child.

11% of schools have a member of their governing body that is responsible for Service children. 2% participate in their LA AF forum.

12% of schools work collaboratively in a cluster to support their Service children. 71% would like to work collaboratively.



SSCE Cymru school survey

Resources and training

Resources that schools would like

Toolkit / information pack

Funding guidance

Mental Health and Wellbeing support for Service children information

School checklist (suggested activities)

Good practice guide

PowerPoint Presentation for school staff and pupils – on the Armed Forces and Service children experiences.

Training

59% were interested in attending a training session on supporting Service children in education.



SSCE Cymru school survey

SSCE Cymru response

Created resources

[SSCE Cymru School Toolkit](#)

[SSCE Cymru Tools](#)

- Presentation template
- Transition guide
- Pupil voice guidance
- Family questionnaire template.

[School checklist](#)

[Funding guidance](#)

[Case studies](#)

Developed CPD training

Two-hour
CPD
delivered on
MS Teams for
school staff
in groups of
up to eight.

Feedback
shows that
100%
of participants
have found the
CPD sessions
beneficial.

*"The whole course
was fantastic. I
never really
thought about the
impact on Service
children so it was a
real eye opener."*

Available at www.SSCECymru.co.uk

Service Children's Progression



Q&A

Discussion

**Was the content from today's presentations what you'd expected?
Was there anything that surprised you?**

What actions have you already taken in your setting to support Service children?

What can you take away from this session to further enhance your support for Service children?

Service Children's Progression



Reflection

Service Children's Progression



Thank you

Steph Fawdry - head.2450@raf-benson.oxon.sch.uk

Millie Taylor – SSCECymru@wlga.gov.uk

